

An aerial photograph of the Panama Canal locks, showing the massive concrete structures and the waterway. In the background, the city of Panama is visible, including the skyline and a large hill. The sky is overcast with grey clouds. The image is framed by a white diagonal shape on the left and bottom-left corners, and a red diagonal line on the right and bottom-right corners.

Expeditors®

PANAMA

Gateway to the World



Powered by the canal and its central location, Panama is the **ultimate logistics bridge**, connecting continents and **driving global trade**.

150 +

multinational companies have est. regional HQs in Panama since 2007

5%

of global maritime trade and nearly 10–15% of U.S. international maritime trade passes through the Panama Canal

Connected to

1900+

Ports Globally - a major transshipment Hub

PANAMA


Strategic Advantages

Geographic Reach




Crossroads of the Americas, enabling faster access to both North and South America

Cost Efficiency



Lower drayage and warehousing costs compared to traditional US onforwarding, with bonded and FTZ options

Speed to Market



Lower drayage and warehousing costs compared to traditional US onforwarding, with bonded and FTZ options

Resilience & Stability



Panama's dollarized economy, political stability, and absence of natural disasters make it a secure logistics base



PANAMA

Key Ports

Manzanillo International Terminal



High-volume container throughput

Cristóbal- Panamá Ports Company (PPC)



Multipurpose terminal, well-connected to rail and road networks

Colon Container Terminal (CCT)



Strategic access to DAL and regional routes

Balboa - Panamá Ports Company (PPC)



Direct Canal access, major transshipment hub

Panamá International Terminal (PSA)



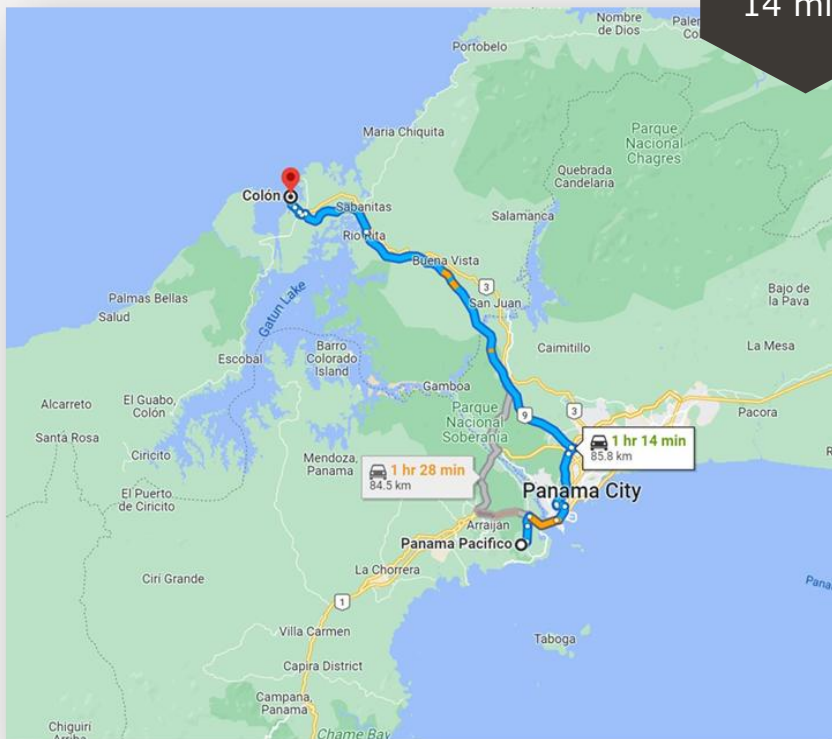
Deepwater terminal with cutting-edge container handling



IN COUNTRY CONNECTIVITY

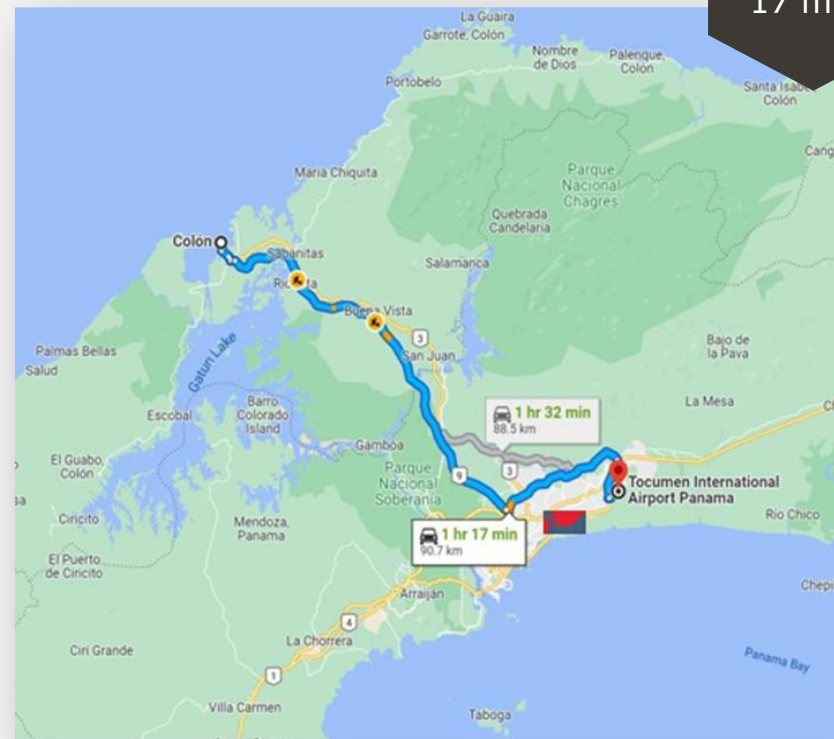
Colon HUB to Pacific Port


1 hour & 14 mins



Colon HUB to Airport


1 hour & 17 mins

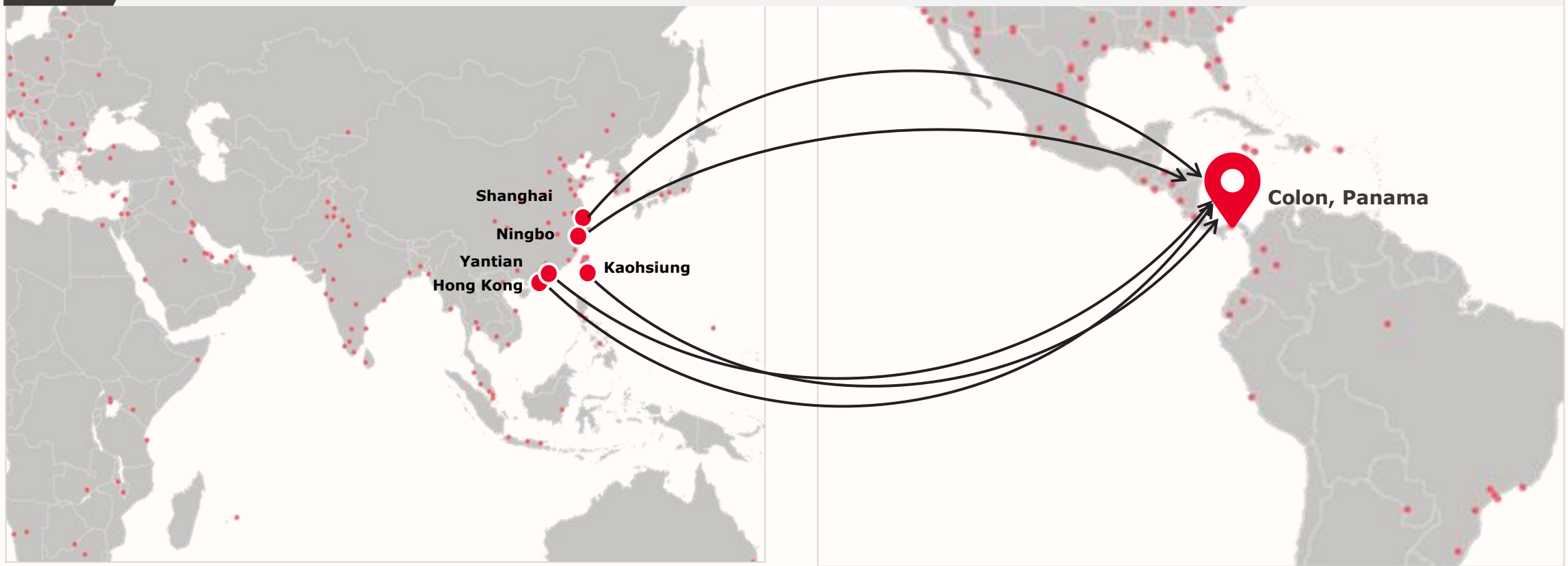


INBOUND FLOWS - OCEAN

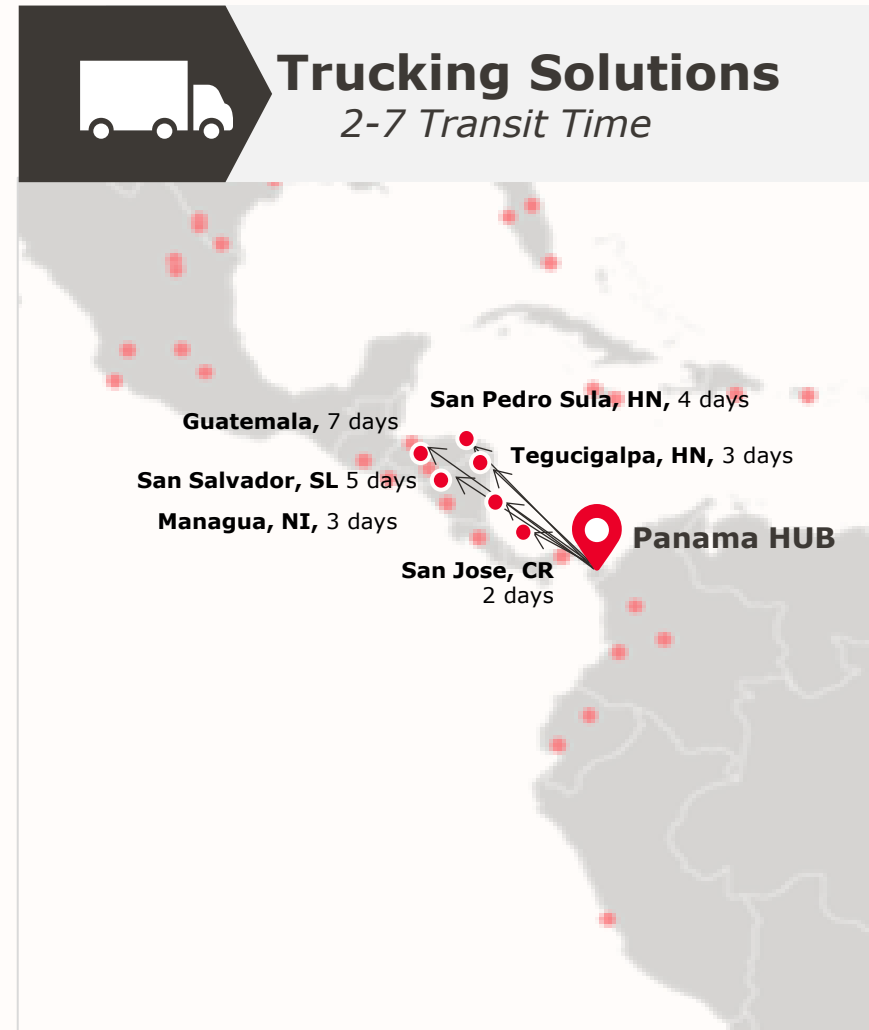
25
Avg. Days –
Transit Time



- ✓ Simplified process vs. the US Traditional Forwarding Stock Location in Miami
- ✓ Wide carrier footprint and direct services
- ✓ Ability to offer multiple sailing, routing and rate options to best meet our customers' requirements.
- ✓ Reduced Logistics Cost



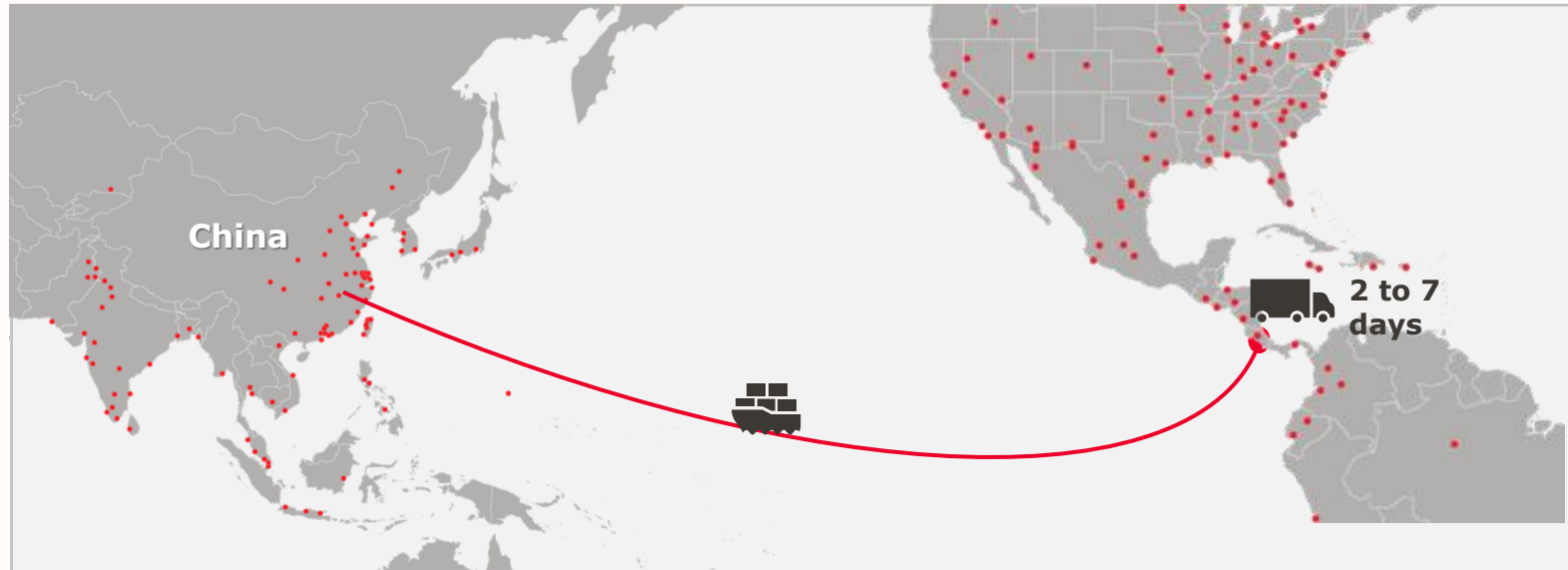
OUTBOUND FLOWS – OCEAN & TRUCK



Property of Expeditors International of Washington, Inc. and its subsidiaries. Reproduction by written authorization only.



EXPRESS OCEAN SERVICE



- Panama feeding Costa Rica (SJO),
- Guatemala (GUA) and El Salvador (SAL)
- Avoid congestion, demurrage, delays
- Cross Dock
- Expeditors Bonded Warehouse
- FCL/LCL FTL/LTL
- Agile and seamless custom process
- Real time tracking & end to end visibility
- Cost Savings
- Enhanced security protocols





**85+ destinations
in 32 countries**

Connecting through the Hub of the Americas® in Panama.

OUTBOUND FLOWS-AIR



17 million passengers

PTY International Airport is one of the busiest airports in Latin America, handling over 17 million passengers per year



**60 destinations in
30 countries**

Headquarter of "COPA Airlines", Panama's flag carrier, with an extensive route network



**Speed to market &
Flexibility**

reaching all major countries in Central & South America within hours and daily flights.



SPEED TO MARKET LEADS TO SAVINGS



**Shorter outbound transit from
Panama vs Miami**

=



**Competitive Advantage &
Working Capital Savings**



Scenario:

- 10 shipments valued at \$100,000
- Transit reduction of 9 days routed through Panama vs. Miami
- **.027%** Cost savings for every **1 day of transit reduction**
- 10% cost of capital

In Transit Carrying Cost Savings:



\$2,430 savings

9 days × \$27/day × 10 shipments





EXPEDITORS PANAMA DISTRIBUTION FACILITY

COLON

LOGISTICS

PARK

EXPEDITORS INFRASTRUCTURE BENEFITS

- Faster port access, with direct connectivity to CCT Terminal and meters away from MIT Terminal, reducing transit times and drayage costs
- Modern infrastructure, designed to meet international logistics standards
- High ceilings, wide loading areas, and enhanced security. Best in class in the entire Market
- Simplified operations, offering better control, real-time visibility, flexibility and fewer restrictions compared to the "Old Colon Free Zone - CFZ"
- Our logistics environment is professional and reliable, trusted by multinational clients who value operational efficiency and compliance



EXPEDITORS PANAMA

Colon Distribution Center



- Class A+ Facility, built for modern logistics
- 18,000 SQM
- 34,500 SQM for future growth
- 40 Docks
- 12 Meters Height
- Inside Colon Container Terminal (CCT)
- Less than 1 Mile away from Manzanillo and Cristobal Terminals
- Near the Atlantic entrance of the Panama Canal
- In-house Customs Officers
- Modern gated park, 24/7 security
- High security Standards (Same as Port Terminal)



EXPEDITORS PANAMA DISTRIBUTION FACILITY

PANAPARK

FREE

ZONE





EXPEDITORS INFRASTRUCTURE BENEFITS

- Faster airport access
- Near connectivity with the metro service.
- Modern infrastructure, designed to meet international logistics standards
- Sustainable infrastructure, strategic location, and enhanced security
- Simplified operations, offering better control and real-time visibility
- Trusted logistics, built for efficiency and compliance.
- The free zone allows various activities such as: Manufacture, assembly, value added services, logistics services, high technology and others



EXPEDITORS PANAMA

PANAPARK FREE ZONE



- Class A+ Facility, built for modern logistics
- 975 SQM
- 12 Meters Height
- 8,000+ pallet positions
- 6 miles away from Tocumen International Airport
- Less than 3 Miles away from metro terminal
- Modern Security system, 24/7 security
- Sustainable facilities, it has solar panels
- Tax and customs incentive framework and benefits.



EXPEDITORS PANAMA DIFFERENTIATORS



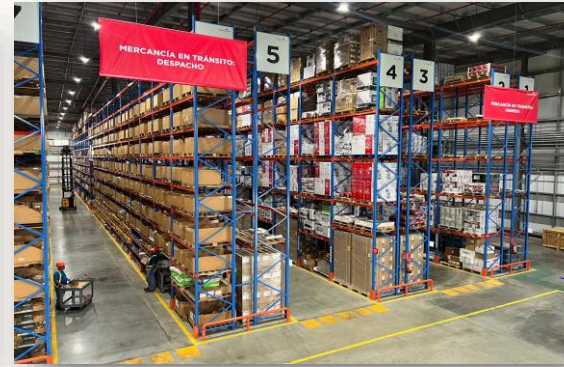
INFRASTRUCTURE

- Modern, Class-A facility
- Built for scalability
- High Security standards



PRIME LOCATIONS

- Strategic locations inside CCT (faster drayage and lower costs) and near Tocumen Airport
- Lower Risk of Port Congestion Delays
- Ideal for Regional Hubs



EFFICIENCY

- Faster Turnaround for Imports/Exports
- Streamlined Drayage and Documentation
- FTZ designed for logistics efficiency and flexibility



CUSTOMS

- On-site Customs officer
- 24/7 availability
- Faster clearance times



YOU'D BE SURPRISED HOW FAR WE'LL GO FOR YOU.®

[EXPEDITORS.COM](https://www.expeditors.com)