

# MEDICAL DEVICES

SYDNEY

HEALTHCARE &  
MEDICAL DEVICES

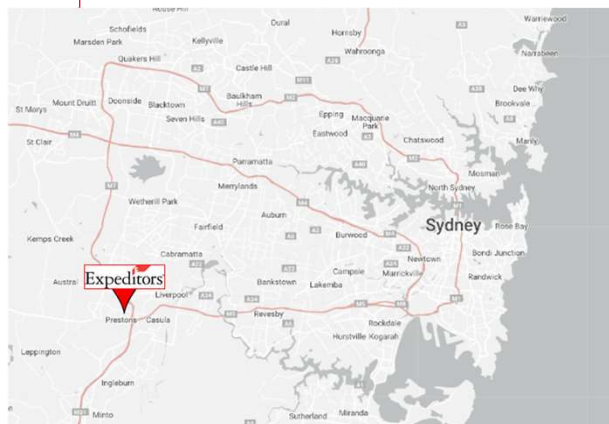
## FORWARD STOCKING

### Client Profile

An innovator and market leader in medical technologies, focusing on Orthopedics and spinal care for patients around the world.

### Service Needs

Facing space constraints and an aging company owned facility, our client engaged Expeditors to support in the forward stocking of their premium spinal care equipment in strategic locations. It was identified that engaging with a network the strength of Expeditors would allow for seamless movement of their high value, critical products direct from manufacturer to destination markets with fewer touch points and in a faster fashion.



### Facility Overview

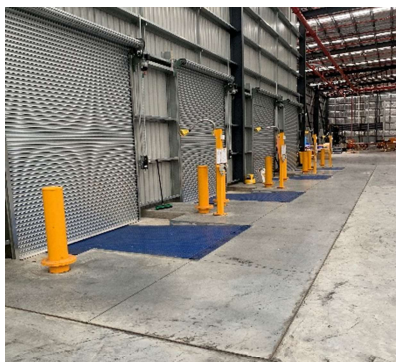
- 13,000 sqm multi-client facility
- 10,000+ rackable pallet positions of varying sizes configured to product.
- Strategically located close to all major road interchanges and depots.

### Operational Overview

- Batch and Serial number control on all items (inbound and outbound)
- Direct to Hospital fulfilment model with white glove delivery
- VAS programs for configuration and customization of base lots.

### Activity, Volumes & Performance

- 20-40 inbound receipts per month
- 3,500 lines/month
- 750 storage locations
- 60-100 orders/month
- 99.98% Dock to Stock (24 hrs.)
- 100% Inventory Accuracy
- 100% On-Time Shipping (24 hrs.)
- Critical Service program (<4hr TAT)



### Value Added Services

- Serial number capture
- Re-labelling
- Pick and Pack
- Onsite rework space
- Light assemble pre delivery

### Continuous Improvement

- Predictive storage locating analysis to enable critical service program
- Upstream integration with shipping origin for 'hands off' ASN data sharing

### IT Integration

- EDI integration for ASN based on container load plan & HBL
- Exp.o Visibility Min/Max management
- Carrier integration for domestic white glove shipping

